

CIMA[®]
Industries Inc.
Engineering, Processing and Packaging Technologies

MEDICAL DIVISION PRODUCT CATALOG



*Integral solutions
in health care*



Our Advanced Productions Lines

1.ATC(Automatic Temperature Control)System,stable and accurate ($\pm 0.5^{\circ}\text{C}$)

2.ASS(Automatic Stripping System), Efficient, and Less Labor

3.ACS(Automatic Counting System),efficient and error free

4.ADS(Automatic Dosing System),precise,less human factors

5.High percentage Spot Check, High quality assured

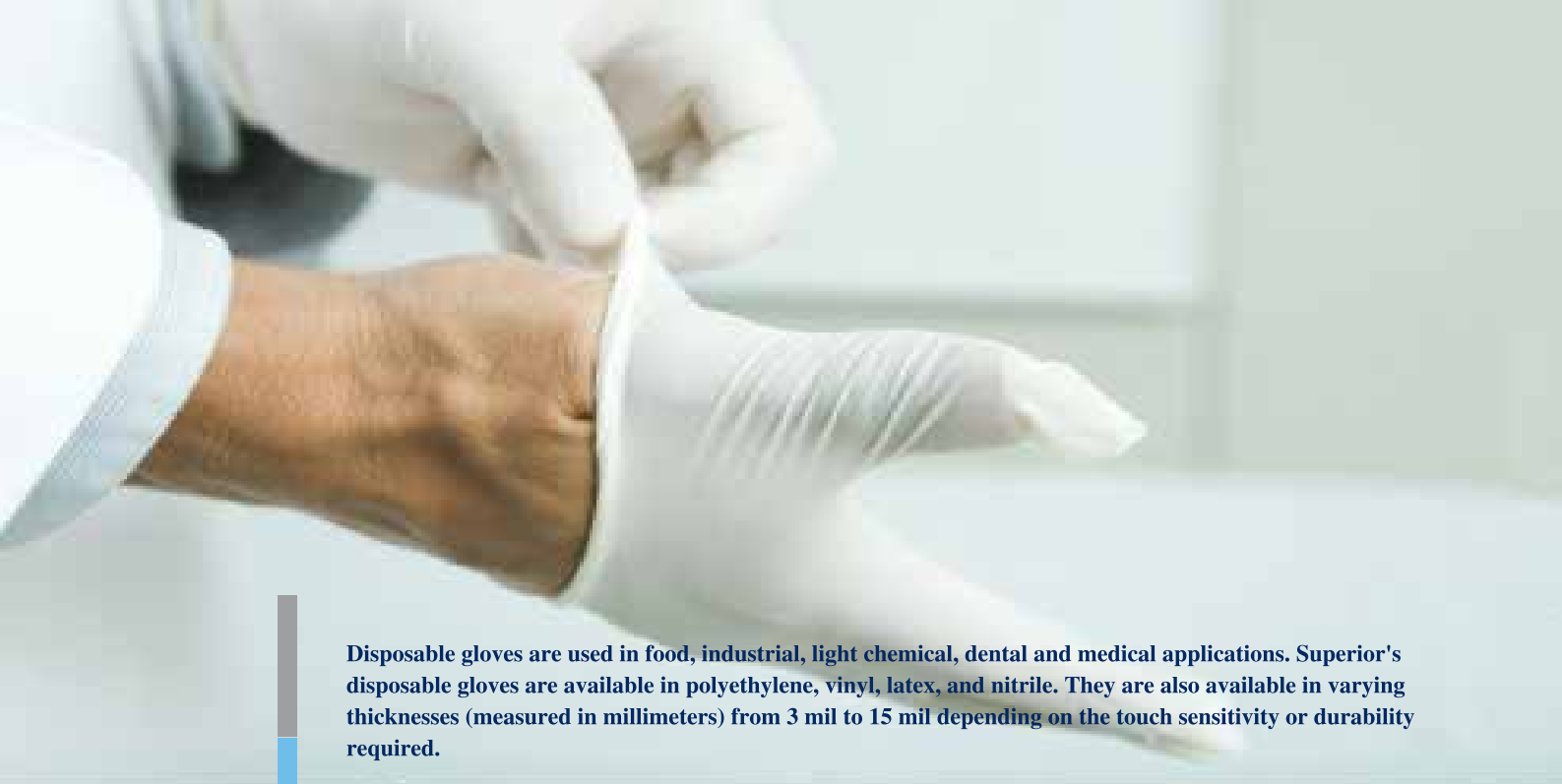
6.Gas-smoke retrieving,Desulfurization and Dedusting,WCS(Water Circulation System),care for the environment.



Advanced Production

- 1. Class 100,000 Clean Room for Dust-Free Production Environment*
- 2. ISO 9001, EN14683 Certification*
- 3. Total Quality Control for sustainable production*
- 4. Fabric thickness from 12 grams to 150 grams per square meter*
- 5. Fabric coating, including anti-static treatment, up to 160cm wide*
- 6. World Class raw materials from PGI, SAAF and Dupond.*





Disposable gloves are used in food, industrial, light chemical, dental and medical applications. Superior's disposable gloves are available in polyethylene, vinyl, latex, and nitrile. They are also available in varying thicknesses (measured in millimeters) from 3 mil to 15 mil depending on the touch sensitivity or durability required.



TouchFlex^{*}

Synthetic Exam Glove

STYLE	MATERIAL	SHAPE	COLOR	SIZES	CUFF	GLOVE-INTERIOR	GLOVE-EXTERIOR	THICKNESS	PACKAGING
VG301	Sketch Vinyl	Ambidextrous	Yellow	S-XL	Beaded	Powder-Free	Smooth	3.2 mil	100 Gloves Per Box 10 Boxes Per Case



Specifications:

- Ultra stretch vinyl synthetic
- Advanced Latex-free formulation, No allergic reaction
- 100% DOP/DEHP free
- PU Coating for easy donning
- Ambidextrous, beaded cuff and smooth external finish
- Non-Sterile

Applications:

Foodservice / Healthcare / Dental / Industrial Safety / Laboratory / Homecare



TouchFlex^{*}

Phthalate-Free Glove

STYLE	MATERIAL	SHAPE	COLOR	SIZES	CUFF	GLOVE-INTERIOR	GLOVE-EXTERIOR	THICKNESS	PACKAGING
VG501	Vinyl	Ambidextrous	Clear	S-XL	Beaded	Powder-Free	Smooth	3.2 mil	100 Gloves Per Box 10 Boxes Per Case
VG505	Vinyl	Ambidextrous	Clear	S-XL	Beaded	Lightly Pre-Powdered	Smooth	3.2 mil	100 Gloves Per Box 10 Boxes Per Case



Specifications:

- 100% poly vinyl chloride (PVC)
- Advanced Latex-free formulation, No allergic reaction
- 100% DOP/DEHP free, Phthalate-Free
- Lightly powdered or PU Coating for easy donning
- Ambidextrous, beaded cuff and smooth external finish
- Non-Sterile

Applications:

Foodservice / Healthcare / Dental / Industrial Safety / Laboratory / Homecare





TouchFlex^{*}

Nitrile Exam Glove

STYLE	MATERIAL	SHAPE	COLOR	SIZES	CUFF	GLOVE-INTERIOR	GLOVE-EXTERIOR	THICKNESS	PACKAGING
NG101	Nitrile	Ambidextrous	Clear	S-XL	Beaded	Powder-Free	Textured	4mil	100 Gloves Per Box 10 Boxes Per Case
NG105	Nitrile	Ambidextrous	Clear	S-XL	Beaded	Lightly Pre-Powdered	Textured	4mil	100 Gloves Per Box 10 Boxes Per Case



Specifications:

- 100% nitrile (Acrylonitrile-butadiene)
- Advanced Latex-free formulation, No allergic reaction
- Extraordinary strength and puncture resistance while maintaining tactile sensitivity
- Lightly powdered or PU Coating for easy donning
- Ambidextrous, beaded cuff and smooth external finish
- Non-Sterile

Applications:

Foodservice / Healthcare / Dental / Industrial Safety / Laboratory / Homecare



TouchFlex^{*}

Latex Exam Glove

STYLE	MATERIAL	SHAPE	COLOR	SIZES	CUFF	GLOVE-INTERIOR	GLOVE-EXTERIOR	THICKNESS	PACKAGING
LG101	Latex	Ambidextrous	Clear	S-XL	Beaded	Powder-Free	Smooth	3.2 mil	100 Gloves Per Box 10 Boxes Per Case
LG105	Latex	Ambidextrous	Clear	S-XL	Beaded	Lightly Pre-Powdered	Smooth	3.2 mil	100 Gloves Per Box 10 Boxes Per Case



Specifications:

- 100% Natural rubber latex
- Low Protein Content
- Lightly powdered or PU Coating for easy donning
- Ambidextrous, beaded cuff and smooth external finish
- Non-Sterile

Applications:

Foodservice / Healthcare / Dental / Industrial Safety / Laboratory / Homecare



TouchFlex^{*}

Latex Surgical Glove

STYLE	MATERIAL	SHAPE	COLOR	SIZES	CUFF	GLOVE- INTERIOR	GLOVE- EXTERIOR	PACKAGING
SG105	Latex	Left Right Hand	Clear	S-XL	Beaded	Lightly Pre-Powdered	Smooth	100 Gloves Per Box, 10 Boxes Per Case



Specifications:


- Natural high quality latex
- Low Protein Content
- High strength and elasticity
- Lightly powdered for easy donning
- Left/Right Hand Fitted for highest comfort
- Beaded cuff and smooth external finish
- Sterile

Applications:

Surgical Room / Operation Room



STERILE EO



Nonwovens are extensively used in the medical field and for protection against biological agents in other sectors. For example, they can be designed to deliver critical safety properties, such as protection against infections and diseases. With today's multi-drug resistant strains of bacteria and virus, nonwovens can help in the fight against cross-contamination and the spread of infection in a medical or surgical environment. They are used only once and incinerated after use, so the need for handling is avoided and the spread of contaminants is minimized.

SafeFlow^{*}

Isolation Face Mask

STYLE	DESIGN	OBSERVE LAYER	INNER LAYER	REVERSE LAYER	LENGTH	WIDTH	NOSE PIECE	PACKAGING
FM301	Ear Loop	18g/m ² SPP	20g/m ² MB filter	25g/m ² SPP	175mm± 2mm	95mm ± 2mm	PVC Coated Wire /PE Non Wire	50pcs/box, 40boxes/case
FM303	Tie-On	18g/m ² SPP	20g/m ² MB filter	25g/m ² SPP	175mm± 2mm	95mm ± 2mm	PVC Coated Wire /PE Non Wire	50pcs/box, 40boxes/case
FM201	Ear Loop	18g/m ² SPP	N/A	25g/m ² SPP	175mm± 2mm	95mm ± 2mm	PVC Coated Wire /PE Non Wire	50pcs/box, 40boxes/case
FM203	Tie-On	18g/m ² SPP	N/A	25g/m ² SPP	175mm± 2mm	95mm ± 2mm	PVC Coated Wire /PE Non Wire	50pcs/box, 40boxes/case



FM301



FM303

Specifications:

- Nonwoven Multi-layer Design Spunbond + Meltblown + Spunbond
- Ultra-Sonic Weld ensures strongest constructed mask, eliminates holes and defects
- Adjustable Nose Piece for better fit
- Fluid Resistant
- BFE 95%

Applications:

Foodservice / Healthcare / Dental / Industrial Safety / Laboratory / Homecare



SafeFlow^{*}

Surgical Face Mask

STYLE	DESIGN	OBSERVE LAYER	INNER LAYER	REVERSE LAYER	LENGTH	WIDTH	NOSE PIECE	PACKAGING
FM701	Ear Loop	20g/m ² SPP	25g/m ² MB filter	25g/m ² SPP	175mm± 2mm	95mm ± 2mm	PVC Coated Wire /PE Non Wire	50pcs/box, 40boxes/case
FM703	Tie-On	20g/m ² SPP	25g/m ² MB filter	25g/m ² SPP	175mm± 2mm	95mm ± 2mm	PVC Coated Wire /PE Non Wire	50pcs/box, 40boxes/case
FM705	Tie-On with anti fog shield	20g/m ² SPP	25g/m ² MB filter	25g/m ² SPP	175mm± 2mm	95mm ± 2mm	PVC Coated Wire /PE Non Wire	50pcs/box, 40boxes/case



FM701



FM703



FM705

Specifications:

- Nonwoven Multi-layer Design
- Unique material for maximum fluid resistance/protection against body fluids
- Ultra-Sonic Weld ensures strongest constructed mask, eliminates holes and defects
- Adjustable Nose Piece for better fit
- Fluid Resistant
- Flammability class I
- Bacterial Filtration Efficiency: 99.7%
- Particle Filtration Efficiency: 98.5%
- Particle size: 0.1 µm

Applications:

Operation Room / Hospital / Dental





SafeFlow

Paper Face Mask

STYLE	DESIGN	MATERIAL	LENGTH	WIDTH	NOSE PIECE	PACKAGING
PF101	Ear Loop	Wet-strength Paper	200mm± 2mm	70mm± 2mm	None	100pc/box, 100boxes/case
PF102	Ear Loop	Wet-strength Paper	200mm± 2mm	70mm± 2mm	None	100pc/box, 100boxes/case



Specifications:

- Our most economical face masks
- High quality wet-strength paper
- Comfortable elastic ear loops for easy donning
- 100pc/box, 100boxes/case

Applications:

Household / Cleaning / Food Service



SafeFlow^{*}

Nuisance Dust Mask

STYLE	STRAP TYPE	MATERIAL	SIZES	NOSE PIECE	PACKAGING
DM120	Single Elastic Fixed Strap	120g/m ² SPP	Universal	Adjustable Metal	50pcs per box, 40boxes per case
DM160	Single Elastic Fixed Strap	160g/m ² SPP	Universal	Adjustable Metal	50pcs per box, 40boxes per case
DM200	Single Elastic Fixed Strap	200g/m ² SPP	Universal	Adjustable Metal	50pcs per box, 40boxes per case



DM120



DM160

Specifications:

- Made of Spunbond polypropylene from 120 g/m² to 240 g/m²
- Helps reduce exposure to dust from sanding particle board drywall or non-lead based paints and fiberglass insulation dust
- Adjustable noseclip reduces pressure points and provides comfort.
- Comfortable
- Lightweight
- Disposable
- Not NIOSH approved

Applications:

Household / Cleaning



Notice:

This dust mask is NOT a respiratory protective device and SHOULD NOT be used against fine particles, gases, vapours or paint sprays. It SHOULD NOT be used where a device with European Directive 89/686 or 89/656 is required.

SafeFlow^{*}

FFP Particulate Respirator

STYLE	RESPIRATOR TYPE	VALVE	ACTIVE CARBON	CERTIFICATIONS	PACKAGING
IDC3S	Cone type	NO	NO	FFP1	20pcs/box, 20boxes/case
IDC4S	Cone type	NO	YES	FFP1	20pcs/box, 20boxes/case
IDC3V	Cone type	YES	NO	FFP1	10pcs/box, 20boxes/case
IDC4V	Cone type	YES	YES	FFP1	10pcs/box, 20boxes/case
IFB3S	Oyster type	NO	NO	FFP1/FFP2	20pcs/box, 20boxes/case
IFB3V	Oyster type	YES	NO	FFP1	10pcs/box, 20boxes/case
IFB4V	Oyster type	YES	YES	FFP1/FFP2	10pcs/box, 20boxes/case
IFB4S	Oyster type	NO	YES	FFP2	20pcs/box, 20boxes/case
IFY3S	Duck Bill type	NO	NO	FFP1/FFP2	20pcs/box, 20boxes/case
IFY3V	Duck Bill type	YES	NO	FFP1	10pcs/box, 20boxes/case

To order add the Certifications required to complete the Product Code. eg. IDC3S/FFP1

Specifications:

- Filter layer after static treatment can filtrate and absorb extremely small harmful industrial powder effectively to prevent anthracosilicosis
- Adjustable nose clip makes the mask closer to the face so that powder cannot leak in between.
- Elastic cords made of Lycra sewn by means of supersonic welding can protect those who wear the mask more effectively.
- Conforms to the requirements of European Community Directive: 89/686 (articles 11.B)
- Conforms to European Standard EN 149:2001 as class FFP2 respirator for use against non-toxic to low toxicity solids and liquid aerosols
- Exhalation valve fitted with the exclusive “butter-fly” opening-closing system.
- Latex and PVC free

Applications:

- Construction,
- Mining
- Textile
- Grinding
- Pharmacy
- Cement, glass and hardware.

Approval EN149: 2001	Protection level(xOEL) APF	Non toxic dusts	Fine toxic dusts /mists fumes	v.fine toxic dusts /mists fumes	Metal fume	Oil/water based particulates
FFP 1	4	○				○
FFP 1	4	○				○
FFP 2	10	●	○		●	○
FFP 2	10	●	○		●	○
FFP 3	20	●	○	○	○	○

○ Recommended ● Alternative



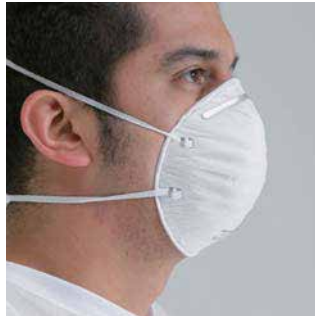
CE 0194

EN149



SafeFlow

FFP Particulate Respirator



IDC3S



IDC4V



IDC4S



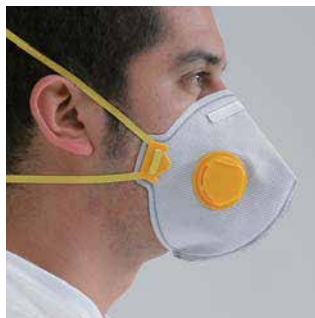
IFB3S



IDC3V



IFB3V



IFB4V



IFY3S

SafeFlow^{*}

N95 Particulate Respirator

STYLE	RESPIRATOR TYPE	VALVE	ACTIVE CARBON	CERTIFICATIONS	PACKAGING
IDN3S	Cone type	NO	NO	N95	20pcs/box, 20boxes/case
IDN4S	Cone type	NO	YES	N95	20pcs/box, 20boxes/case
IDN3V	Cone type	NO	NO	N95	10pcs/box, 20boxes/case
IDN4V	Cone type	YES	YES	N95	10pcs/box, 20boxes/case
IFB3S	Oyster type	NO	NO	N95	20pcs/box, 20boxes/case
IFB4V	Oyster type	YES	YES	N95	10pcs/box, 20boxes/case
IFY3S	Duck Bill type	NO	NO	N95	20pcs/box, 20boxes/case

Specifications:

- NIOSH-N95 approved particulate respirator.
- Soft padded nose seal provides exceptional comfort and VALUE.
- Adjustable aluminum nose bridge.
- Comfortable nose foam.
- Two latex-free head straps.
- Easy to use.
- Compliant with 42 CFR part 84.
- Screens out 95% of particles down to about a 0.3 micron size

Applications:

- Construction,
- Mining
- Textile
- Grinding
- Pharmacy
- Cement, glass and hardware.



IDN3S



IDN4S



IDN3V



IDN4V



CIMA[®]
Industries Inc.
Engineering, Processing and Packaging Technologies

SafeFlow^{*}

N95 Particulate Respirator



IFY3S



IFY4S



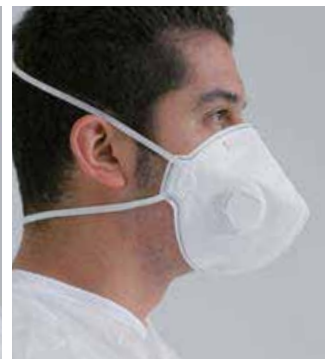
IFY4V



IFY3V



IFB3S



IFB3V



NIOSH **N95**



Nonwoven
Disposables

10



BioWear^{*}

Surgeon's Cap

STYLE	DESIGN	MATERIAL	REVERSE LAYER	SIZES	PACKAGING
SC101	Surgeon's Cap with Back Ties	25g/m ² SPP	White/Green/Blue	Universal	100pcs per bag, 1000pcs per case
SC103	Surgeon's Cap with Back Elastic	25g/m ² SPP	White/Green/Blue	Universal	100pcs per bag, 1000pcs per case
SC105	Surgeon's Cap with Back Ties	25g/m ² SMS+SPP	White/Green/Blue	Universal	100pcs per bag, 1000pcs per case
SC107	Surgeon's Cap with Back Ties	40g/m ² Spunlace	White/Green/Blue	Universal	100pcs per bag, 1000pcs per case



SC101



SC103



SC107



SC105

Specifications:

- Soft and absorbent SMS material, ventilated crown and adjustable ties or elastic band
- Comfortable and Breathable
- Class One flammability rating
- Latex-free

Applications:

Operation Room/Hospital/Homecare



BioWear^{*}

Surgeon's Hood and Head Cover

STYLE	DESIGN	MATERIAL	REVERSE LAYER	SIZES	PACKAGING
SH101	Surgeon's Hood with Front Ties	25g/m ² SPP	White/Green/Blue	Universal	100pcs per bag, 1000pcs per case
SH102	Surgeon's Hood with Front Ties	40g/m ² Spunlace	White/Green/Blue	Universal	100pcs per bag, 1000pcs per case
SH201	Surgeon's Head and Beard Cover	25g/m ² SPP	White/Green/Blue	Universal	100pcs per bag, 1000pcs per case
SH301	Surgeon's Beard Cover	25g/m ² SPP	White/Green/Blue	Universal	100pcs per bag, 1000pcs per case



SH102



SH201



SH301

Specifications:

- Offers complete head coverage
- Available in SPP or multi-layer material SMS
- Hoods tie in back of head
- Beard cover is made of spunbond polypropylene and is held in place with an elastic band

Applications:

Operation Room/Hospital/Homecare



BioWear^{*}

Bouffant Cap

STYLE	DESIGN	MATERIAL	COLOR	SIZES	PACKAGING
BC101	Bouffant Cap	10g/m ² SPP	White/Green/Blue	21"/53cm	100pcs per poly bag, 1000pcs per case
BC102	Bouffant Cap	14g/m ² SPP	White/Green/Blue	24"/61cm	100pcs per poly bag, 1000pcs per case
BC103	Bouffant Cap	25g/m ² SPP	White/Green/Blue	21"/53cm	100pcs per dispenser box, 500pcs per case



BC101

Specifications:

- Spun bonded polypropylene
- 21" and 24" sizes
- Sewn elastic band
- Class One flammability rating

Applications:

Clean Room / Foodservice / Healthcare / Dental / Industrial Safety / Laboratory / Homecare



BioWear^{*}

Mob Cap

STYLE	DESIGN	Material	Color	SIZES	PACKAGING
MC101	Mob Cap Single Elastic	12g/m ² SPP	White/Green/Blue	21"/53cm	100pcs per poly bag, 1000pcs per case
MC102	Mob Cap Double Elastic	12g/m ² SPP	White/Green/Blue	21"/53cm	100pcs per poly bag, 1000pcs per case
MC103	Mob Cap Double Elastic and Metal Strip	12g/m ² SPP	White/Green/Blue	21"/53cm	100pcs per poly bag, 1000pcs per case



MC101



Specifications:

- Secures hair and minimizes the risk of contamination
- Soft non-woven construction for comfort and security
- Elasticated trim accommodates a variety of hairstyles
- Single Elastic or Double Elastics
- With or without Metal Strip

Applications:

Clean Room / Foodservice / Healthcare / Dental / Industrial Safety / Laboratory / Homecare



SureGown^{*}

Standard Spunlace Surgical Gown

STYLE	DESIGN	MATERIAL	STERILIZATION	SIZES	PACKAGING
SSG704A	Standard Surgical Gown	70g/m ² Spunlace	None	M, L, XL, XXL	1 pc/bag, 25 pc/case
SSG704B	Standard Surgical Gown with Hand towel and Wrapper	70g/m ² Spunlace	ETO	M, L, XL, XXL	1 pc/bag, 25 pc/case



Spunlace gowns are made from soft spunlace fabric with anti-static and fluid resistance. This soft, cloth-like spunlace material provides exceptional comfort for those who spend much of their day in a surgical gown. It keeps wearers cool and comfortable. For light to moderate blood exposure, protecting surgeon, first assistance and scrub nurses.

Specifications:

- Soft spunlace fabric (made of woodpulp and polyester)
- Fluid repellent
- Generous cut
- Velcro neck binding
- Book fold

Applications:

Operation Room

SIZE	SURGICAL GOWN
M	125x150cm
L	130x150cm
XL	140x160cm
XXL	150X160cm
XXXL	160X160cm



SureGown^{*}

Standard SMS Surgical Gown

STYLE	DESIGN	MATERIAL	FRONT AND SLEEVE REINFORCEMENT MATERIAL	SIZES	PACKAGING
SSG453A	Standard SMS Surgical Gown	45g/m ² SMS	None	M, L, XL, XXL	1 pc/bag, 25 pc/case
SSG453B	Standard SMS Surgical Gown with Hand towel and Wrapper	45g/m ² SMS	ETO	M, L, XL, XXL	1 pc/sterile, 25 pc/case



Standard SMS Surgical gowns are made from 5-layer polypropylene materials with anti-static and fluid resistance. Three layers of spunbond polypropylene ensure an extraordinary flexibility and drapeability, provide tough abrasion resistance and cloth like feel, and two layers of meltblown polypropylene form an efficient barrier against bacteria, as an exceptional microbial barrier.

Specifications:

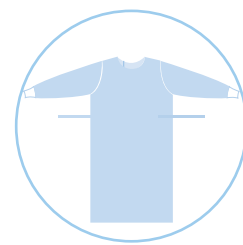
- 5-layer anti-static breathable fabric
- Fluid repellent
- Excellent microbial barrier
- Excellent physical barrier to contaminants and fluids
- Stronger fabric with a matte finish, resistance to tears
- Softer fabric with comfort inside and outside
- Generous cut
- Velcro neck binding
- Book fold

Applications:

Operation Room



SIZE	SURGICAL GOWN
M	125x150cm
L	130x150cm
XL	140x160cm
XXL	150X160cm
XXXL	160X160cm



SureGown^{*}

Fabric Reinforced Surgical Gown

STYLE	DESIGN	GOWN BODY & SLEEVES MATERIAL	FRONT AND SLEEVE REINFORCEMENT MATERIAL	REINFORCEMENT METHOD	STERILIZATION	SIZES	PACKAGING
RSG453A	Fabric Reinforced Surgical Gown	45g/m ² SMS	45g/m ² SMS	Exterior	None	M-XXXL	1 pc/bag, 25 pc/case
RSG455A	Fabric Reinforced Surgical Gown	45g/m ² SMS	40g/m ² SPP	Interior	None	M-XXXL	1 pc/bag, 25 pc/case
RSG453B	Fabric Reinforced Surgical Gown with Hand towel and Wrapper	45g/m ² SMS	45g/m ² SMS	Exterior	ETO	M-XXXL	1 pc/sterile, 25 pc/case
RSG455B	Fabric Reinforced Surgical Gown with Hand towel and Wrapper	45g/m ² SMS	40g/m ² SPP	Interior	ETO	M-XXXL	1 pc/sterile, 25 pc/case



Polypropylene materials with anti-static and fluid resistance. Three layers of spunbond polypropylene ensure an extraordinary flexibility and drapeability, and two layers of meltblown polypropylene form an efficient barrier against bacteria. The critical zones including arm and chest areas are protected by fabric reinforcement with an additional strong and breathable SSMMS. The seams on the sleeves are ultrasonic sealed to avoid fluid penetration through pin holes.

Specifications:

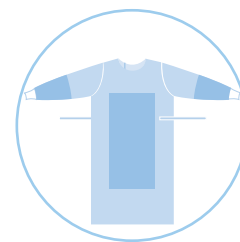
- 5-layer anti-static breathable impervious fabric
- Fluid repellent
- Excellent microbial barrier
- Excellent physical barrier to contaminants and fluids
- Stronger fabric with a matte finish, resistance to tears
- Softer fabric with comfort inside and outside
- Generous cut
- Velcro neck binding
- Book fold

Applications:

Operation Room



SIZE	SURGICAL GOWN
M	125x150cm
L	130x150cm
XL	140x160cm
XXL	150X160cm
XXXL	160X160cm



SafeWear^{*}

Standard Coverall

STYLE	CLOTHING TYPE	WRISTS	CLOSURE	ANKLES	COLOR	MATERIAL	SIZES	PACKAGING
CA101	Coverall without hood or boot	Open	Zipper	Open	White	40g/m ² SPP	S-XXL	1pc per bag, 25pcs per case
CA102	Coverall without hood or boot	Elastic	Zipper	Elastic	White	40g/m ² SPP	S-XXL	1pc per bag, 25pcs per case
CA103	Coverall with hood without boot	Elastic	Zipper	Elastic	White	40g/m ² SPP	S-XXL	1pc per bag, 25pcs per case
CA104	Coverall with hood and boot	Elastic	Zipper	Elastic	White	40g/m ² SPP	S-XXL	1pc per bag, 25pcs per case
CA201	Coverall without hood or boot	Open	Zipper	Open	White	55g/m ² SMS	S-XXL	1pc per bag, 25pcs per case
CA202	Coverall without hood or boot	Elastic	Zipper	Elastic	White	55g/m ² SMS	S-XXL	1pc per bag, 25pcs per case
CA203	Coverall with hood without boot	Elastic	Zipper	Elastic	White	55g/m ² SMS	S-XXL	1pc per bag, 25pcs per case
CA204	Coverall with hood and boot	Elastic	Zipper	Elastic	White	55g/m ² SMS	S-XXL	1pc per bag, 25pcs per case
CA304	Coverall with hood and boot	Elastic	Elastic	Elastic	White	40g/m ² SPP+PE	S-XXL	1pc per bag, 25pcs per case



Standard Coveralls are available in single-layer spunbonded polypropylene for basic coverage or double-layer spunbonded polypropylene coated with polyethylene film or three Layer SMS for increased fluid resistance.

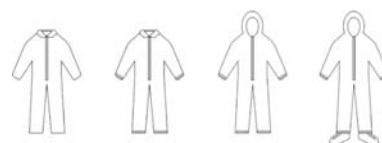
Specifications:

- Made of SPP 30-40 g/m² or SMS 40-55 g/m²
- Zipper Closure
- Open Cuffs or Elastic Cuffs
- Hood or Boots are available
- Three piece hood for best comfort
- Color : White/Blue/Red
- 1pc/poly bag, 25bags/case

SIZE	LENGTH	HEIGHT AVAILABLE
S	198cm	162-170cm
M	204cm	168-176cm
L	210cm	174-182cm
XL	216cm	180-188cm
XXL	222cm	186-194cm
XXXL	228cm	192-200cm

Applications:

- Maintenance and repair
- Powder coating
- Paint Spray
- Insulation laying
- Pharmaceutical manufacture
- Wood processing
- Low level chemical handling/chemical cleanups
- Resin applications
- Pressure/steam water cleaning
- Light spray of cleaning fluids
- Metal processing



SafeWear^{*}

☀️ Type5/6 Coverall

STYLE	CLOTHING TYPE	WAIST	WRISTS	CLOSURE	ANKLES	COLOR	MATERIAL	SIZES	PACKAGING
CO503	Coverall with hood and boot	Elastic	Elastic	Zipper	Elastic	White	60g/m ² SES	S-XXL	1pc per bag, 25pcs per case
CO504	Coverall with hood and boot	Elastic	Elastic	Zipper	Elastic	White	60g/m ² SMS	S-XXL	1pc per bag, 25pcs per case
CO505	Coverall with hood and boot	Elastic	Elastic	Zipper	Zipper	White	60g/m ² PP+ Microporous Film	S-XXL	1pc per bag, 25pcs per case

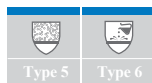


Specifications:

- Excellent barrier against dry particles and liquid chemical splash (CE Type 5/6)
- Laminated microporous material with excellent permeability and robustness
- Elastic waist and ankles for good fit
- 2-Way Zip for extra convenience and protection from contaminants
- Resealable zip flap for additional protection
- Lint Free

Applications:

- Maintenance and repair
- Powder coating
- Paint Spray
- Insulation laying
- Pharmaceutical manufacture
- Wood processing
- Low level chemical handling/chemical cleanups
- Resin applications
- Pressure/steam water cleaning
- Light spray of cleaning fluids
- Metal processing



BioWear^{*}

Standard Isolation Gown

STYLE	CLOTHING TYPE	NECK	WAIST	WRISTS	COLOR	MATERIAL	SIZES	PACKAGING
IG101	Isolation Gown	Ties	Ties	Knit Cuffs	Yellow/Blue	SPP 30g/m ²	Universal	10 per poly bag, 100 per case
IG103	Isolation Gown	Ties	Ties	Elastic	Yellow/Blue	SPP+PE 40g/m ²	Universal	10 per poly bag, 100 per case



IG101



IG103

Specifications:

- Made of Spun bonded polypropylene
- Extra long ties sewn at waist and neckline
- Universal sizing - one size fits all
- Full length gown
- Sewn seams, not glued
- Class One flammability rating
- Latex-free

Applications:

Operation Room

SIZE	ISOLATION GOWN
S	115x127cm
M	115x137cm
L	120x140cm
XL	130X150cm





BioWear^{*}

AAMI Isolation Gown

STYLE	CLOTHING TYPE	NECK	WAIST	WRISTS	COLOR	MATERIAL	SIZES	PACKAGING
IG201	Isolation Gown	Tape	Ties	Elastic	Yellow	SMS 45g/m ²	Universal	10 per poly bag, 100 per case
IG203	Isolation Gown	Tape	Ties	Knit	Yellow	SMS 45g/m ²	Universal	10 per poly bag, 100 per case



Specifications:

- Made of Spun bonded polypropylene
- Extra long ties sewn at waist and neckline
- Universal sizing - one size fits all
- Full length gown
- Sewn seams, not glued
- Class One flammability rating
- Latex-free

Applications:

Operation Room

SIZE	ISOLATION GOWN
S	115x127cm
M	115x137cm
L	120x140cm
XL	130X150cm





BioWear^{*}

PE Gown

STYLE	CLOTHING TYPE	NECK	WRISTS	COLOR	MATERIAL	SIZES	PACKAGING
PG701	PE Gown	Apron Style	Elastics	Blue	PE (Polyethylene)	Universal	10 per poly bag, 100 per case
PG702	PE Gown	Apron Style	Thumb Loop	Blue	PE (Polyethylene)	Universal	10 per poly bag, 100 per case
PG801	CPE Gown	Apron Style	Elastics	Blue	CPE (Chlorinated Polyethylene)	Universal	10 per poly bag, 100 per case
PG802	CPE Gown	Apron Style	Thumb Loop	Blue	CPE (Chlorinated Polyethylene)	Universal	10 per poly bag, 100 per case



Specifications:

- One-piece thumb loop on sleeve keeps gown secure under gloves.
- Made from a 100% Chlorinated Polyethylene material for impervious protection.
- Apron-style neck, Easy on/off
- Comes packed in a handy dispenser box for use in many areas.
- Available in Universal and X-Large sizes.

Applications:

Operation Room



BioWear^{*}

Patient Exam Gown

STYLE	CLOTHING TYPE	SLEEVES	COLOR	MATERIAL	SIZES	PACKAGING
PAT101	Patient Exam Gown	No	Blue	SPP 30g/m ²	Universal	10 per poly bag, 100 per case
PAT102	Patient Exam Gown	No	Blue	SMS 45g/m ²	Universal	10 per poly bag, 100 per case



Patient examination gowns are manufactured from the same material as the long sleeve gown.

Short sleeves are preferred in some areas and are cooler in summer.

Specifications:

- Suitable for staff and patient use.
- Non-sterile.
- Ties at the neck

Applications:

Hospital/Homecare





BioWear*

Scrub Suit

STYLE	CLOTHING TYPE	NECK	WAIST	COLOR	MATERIAL	SIZES	PACKAGING
SS101	Scrub Suit with Short open Sleeve	V-Shape	Ties	Blue	Spunlace 45 g/m ²	S-XL	10 per poly bag, 100 per case
SS201	Scrub Suit with Short open Sleeve	Round	Ties	Blue	Ultra Soft SMS 35 g/m ²	S-XL	10 per poly bag, 100 per case



The scrub tunic and pants are available in Spunlace material for more comfortable or SMS material for increased fluid resistance.

Specifications:

- Multiple pockets are available
- Ultra Soft SMS for Utmost comfort
- V-Shape or Round neck style
- Size : S, M, L, XL
- 1pc/poly bag, 50bags/case

Applications:

Hospital/Homecare



BioWear^{*}

Lab Coat & Lab Jacket

STYLE	CLOTHING TYPE	COLLAR	CUFF	COLOR	MATERIAL	SIZES	PACKAGING
LAB100	Lab Coat	Drop Down	Elastic	Blue/White/Pink	SPP 30 g/m ²	S-XL	5 pcs per poly bag, 20 bags per case
LAB101	Lab Coat	Knit	Knit	Blue/White/Pink	SMS 40 g/m ²	S-XL	5 pcs per poly bag, 20 bags per case
LAB103	Lab Coat	Drop Down	Knit	Blue/White/Pink	SMS 40 g/m ²	S-XL	5 pcs per poly bag, 20 bags per case
LAB201	Lab Jacket	Knit	Knit	Blue/White/Pink	SMS 40 g/m ²	S-XL	5 pcs per poly bag, 20 bags per case
LAB203	Lab Jacket	Drop Down	Knit	Blue/White/Pink	SMS 40 g/m ²	S-XL	5 pcs per poly bag, 20 bags per case



LAB101



LAB201

SIZE	LAB COAT
S	98x118cm
M	103x123cm
L	107x128cm
XL	110x134cm
XXL	117x140cm

Specifications:

- Spun bonded polypropylene
- Sewn pockets and seams
- Cotton knit cuff and collar
- Plastic snaps
- Class One flammability rating
- Latex-free

Applications:

Hospital/Homecare



BioWear^{*}

Disposable Shorts & Brief

STYLE	CLOTHING TYPE	WAIST	COLOR	MATERIAL	SIZES	PACKAGING
PES101	Patient Exam Shorts	Elastic	Blue	SPP 45 g/m ²	M-XL	5 pcs per poly bag, 20 bags per case
PES102	Patient Exam Shorts	Elastic	Blue	SMS45 g/m ²	M-XL	5 pcs per poly bag, 20 bags per case
DB101	Disposable Brief Man	Elastic	Blue	SPP 35 g/m ²	M-XL	1pc/bag, 5pcs/pack, 60packs/ Case
DB102	Disposable Brief Woman	Elastic	Blue	SPP 35 g/m ²	M-XL	1pc/bag, 5pcs/pack, 60packs/ Case



Patient Exam Shorts

- Made from three layer SMS material for comfort and fluid resistance
- Durable nonwoven material
- Provides comfort with modest coverage
- Elastic waist provides a snug fit
- Navy Blue
- Ideal for Knee and Leg Exams

Applications:

Healthcare / Homecare



Disposable Brief

- Manufactured from soft, non-woven material
- Softer and stronger than paper alternatives
- Ensure maximum comfort and dignity for the patient
- Provide secure fit and stay strong when wet
- Available in Medium, Large and Extra Large
- Supplied in packs of 100 briefs
- Contains latex

Applications:

Healthcare / Homecare



Disposable Bed Sheet

STYLE	CLOTHING TYPE	COLOR	MATERIAL	SIZES	PACKAGING
BED101	Bed Sheet	White	SPP 25g/m ²	140 x 229 cm	50pcs/bag, 2bags/case
BED102	Bed Sheet	White	SPP+PE 60g/m ²	140 x 229 cm	50pcs/bag, 2bags/case
BED103	Bed Sheet	White	SMS 60g/m ²	140 x 229 cm	50pcs/bag, 2bags/case



Specifications:

- Made from soft, flame retardant non-woven material, providing comfortable, hygienic and cost effective bedding.
- Ideal for use in all areas where short stays of frequent bedding changes are required or where laundering is a problem
- Single Bed Size
- Independently tested for flame retardancy to ignition source 7

Applications:

Healthcare / Homecare





Shoe Cover

BioWear^{*}

STYLE	CLOTHING TYPE	COLOR	EXTERIOR	MATERIAL	SIZES	PACKAGING
SHOE101	Standard Shoe Cover	Blue/White	Smooth	SPP 40 g/m ²	Universal	10pcs/roll,10rolls/bag,20bags/case
SHOE102	Non-Skid Shoe Cover	Blue/White	Embossed	SPP 40 g/m ²	Universal	10pcs/roll,10rolls/bag,20bags/case
SHOE103	Non-Skid Shoe Cover	Blue/White	CPE sole	SPP 40 g/m ² + CPE Sole	Universal	10pcs/roll,10rolls/bag,20bags/case



SHOE101

Standard shoe Cover

- 40g, low particulate shoe covers.
- 100% non-woven spunbond polypropylene.
- Elastic ankles fit most shoe sizes



SHOE102

Non-Skid Polypropylene Shoe Cover

- 40g, low particulate shoe covers.
- 100% non-woven spunbond polypropylene.
- Elastic ankles fit most shoe sizes
- Skid-free soles for extra traction and improved safety



SHOE103


Polypropylene Shoe Cover with Polyethylene Soles

- White, 40g non-woven polypropylene shoe covers with a blue CPE sole.
- Provides outstanding liquid protection when a low particulate material is needed

Applications:

Foodservice / Healthcare / Dental / Industrial Safety / Laboratory / Homecare



A close-up photograph of a person's torso. They are wearing a blue short-sleeved shirt. Over the shirt, they are wearing a clear plastic protective apron. The apron has a white V-neck collar and a white elastic strap that goes around the waist. The apron is slightly wrinkled and shows some reflections of light. The background is a plain, light-colored wall.

Plastic disposables are made from light weight plastic such as hdpe, low density polyethylene (ldpe), cpe and is widely used in food service, hygiene, hospital and house hold.

Plastic Disposable Apron

STYLE	CLOTHING TYPE	SURFACE	SURFACE	MATERIAL	SIZES	PACKAGING
PA101	Apron	Smooth/Embossed	Blue/White/Pink	CPE	Universal	100pcs/bag,20bags/case
PA201	Apron	Smooth/Embossed	Blue/White/Pink	HDPE	Universal	100pcs/bag,20bags/case
PA202	Apron	Smooth/Embossed	Blue/White/Pink	LDPE	Universal	100pcs/bag,20bags/case



Specifications:

- Made from a mixture of 65% Low Density Polyethylene (LDPE) and 35% Linear Low Density Polyethylene (LLDPE)
- Excellent resistance to chemical corrosion
- Effective against dirt, moisture and oil
- Length 120 or 140 cm
- Width 80cm
- Color white

Applications:

Foodservice / Healthcare / Dental / Homecare



Plastic Sleeve Cover

STYLE	CLOTHING TYPE	SURFACE	SURFACE	MATERIAL	SIZES	PACKAGING
SLC101	Sleeve Cover	Smooth/Embossed	Blue/White/Pink	PE	Universal	100pcs/bag,20bags/case



Specifications:

- Made from Polyethylene material
- Low cost
- Waterproof protection for light duty
- Ideal for wet or dry areas in food processing, pharmaceutical and medical industries

Applications:

Hospital/Foodservice/Household



Plastic Glove

STYLE	TYPE	SURFACE	SURFACE	MATERIAL	SIZES	PACKAGING
PEG101	Disposable Glove	Smooth/Embossed	Blue/White/Pink	CPE	S/M/L	100pcs/Poly Dispenser,10,000pcs/case
PEG105	Disposable Glove	Smooth/Embossed	Blue/White/Pink	HDPE	S/M/L	100pcs/Poly Dispenser,10,000pcs/case
PEG106	Disposable Glove	Smooth/Embossed	Blue/White/Pink	LDPE	S/M/L	100pcs/Poly Dispenser,10,000pcs/case
PEG201	Disposable Glove Long Sleeve	Smooth/Embossed	Blue/White/Pink	CPE	S/M/L	100pcs/Poly Dispenser,20,000pcs/case



PEG101



PEG105/106



PEG201

Specifications:

- Made from premium quality polyethylene(HDPE,LDPE or CPE).
- Containing no natural rubber latex, the gloves are powder-free
- Smooth or embossed surface

Applications:

Hospital/Foodservice/Household

SIZE	SMALL	MEDIUM	LARGE	TOLERANCE
Length	27cms	28.5cm	30cm	+/- 5%
Width	23.41cms	25.9cm	24cm	+/- 5%



Plastic Shoe Cover

STYLE	CLOTHING TYPE	COLOR	SURFACE	MATERIAL	SIZES	PACKAGING
SHOE701	Shoe Cover	Blue	Smooth	PE	Universal	10pcs/roll,10rolls/bag,20bags/case
SHOE702	Shoe Cover	Blue	Smooth	CPE	Universal	10pcs/roll,10rolls/bag,20bags/case



Specifications:

- Heavyweight, low-density, polyethylene shoe covers
- Elasticated opening fits over shoe top
- Anti-static
- Liquid-resistant (except for seams)
- Low particulate, lint-free

Applications:

Foodservice / Healthcare / Dental / Industrial Safety
/ Laboratory / Homecare



SurePeel^{*}

Self Seal Pouch (Flat)

STYLE	PAPER TYPE	FILM TYPE	FILM COLOR	DIMENSION(MM)	PACKAGING
SPF057130	Medical Grade 60-70 g/m ²	Medical Grade 52-54 g/m ²	Clear/Blue/Green	57*130	200pc/box
SPF070260	Medical Grade 60-70 g/m ²	Medical Grade 52-54 g/m ²	Clear/Blue/Green	70*260	200pc/box
SPF090165	Medical Grade 60-70g/m ²	Medical Grade 52-54 g/m ²	Clear/Blue/Green	90*165	200pc/box
SPF090260	Medical Grade 60-70 g/m ²	Medical Grade 52-54 g/m ²	Clear/Blue/Green	90*260	200pc/box
SPF135285	Medical Grade 60-70 g/m ²	Medical Grade 52-54 g/m ²	Clear/Blue/Green	135*285	200pc/box
SPF190360	Medical Grade 60-70 g/m ²	Medical Grade 52-54 g/m ²	Clear/Blue/Green	190*360	200pc/box
SPF250400	Medical Grade 60-70g/m ²	Medical Grade 52-54 g/m ²	Clear/Blue/Green	250*400	200pc/box



Specifications:

- Chevron Shaped end with thumbholes for ease of opening.
- Manufactured from tinted heatsealable PET/PP film, 3 side sealed with a ribbed pattern to medical grade paper incorporating Steam and ETO indicators.
- Wet strength treated virgin medical grade paper that meets or exceeds medical pouch standards.
- Provide breathability, sterile barrier, and indication of processing without the need of heat-seal

Applications:

Healthcare / Dental



SurePeel^{*}

Heat Seal Roll (Flat)

STYLE	PAPER TYPE	FILM TYPE	FILM COLOR	DIMENSION(MM)	PACKAGING
HRF055200	Medical Grade 60-70 g/m ²	Medical Grade 52-54 g/m ²	Clear/Blue/Green	55*200	8Rolls/Carton
HRF075200	Medical Grade 60-70 g/m ²	Medical Grade 52-54 g/m ²	Clear/Blue/Green	75*200	6Rolls/Carton
HRF100200	Medical Grade 60-70g/m ²	Medical Grade 52-54 g/m ²	Clear/Blue/Green	100*200	5Rolls/Carton
HRF150200	Medical Grade 60-70 g/m ²	Medical Grade 52-54 g/m ²	Clear/Blue/Green	150*200	3Rolls/Carton
HRF200200	Medical Grade 60-70 g/m ²	Medical Grade 52-54 g/m ²	Clear/Blue/Green	200*200	2Rolls/Carton
HRF250200	Medical Grade 60-70 g/m ²	Medical Grade 52-54 g/m ²	Clear/Blue/Green	250*200	2Rolls/Carton
HRF300200	Medical Grade 60-70g/m ²	Medical Grade 52-54 g/m ²	Clear/Blue/Green	300*200	1Rolls/Carton
HRF350200	Medical Grade 60-70g/m ²	Medical Grade 52-54 g/m ²	Clear/Blue/Green	350*200	1Rolls/Carton



Specifications:

- Manufactured from tinted heatsealable PET/PP film, 3 side sealed with a ribbed pattern to medical grade paper incorporating Steam and ETO indicators.
- Wet strength treated virgin medical grade paper that meets or exceeds medical pouch standards.
- Provide breathability, sterile barrier, and indication of processing
- Suitable for packaging extra long products or creating individual pouches of special length.

Applications:

Healthcare / Dental



SurePeel^{*}

Heat Seal Roll (Gusseted)

STYLE	PAPER TYPE	FILM TYPE	FILM COLOR	DIMENSION(MM)	PACKAGING
HRG055200	Medical Grade 60-70 g/m ²	Medical Grade 52-54 g/m ²	Clear/Blue/Green	55*200	8Rolls/Carton
HRG075200	Medical Grade 60-70 g/m ²	Medical Grade 52-54 g/m ²	Clear/Blue/Green	75*200	6Rolls/Carton
HRG100200	Medical Grade 60-70g/m ²	Medical Grade 52-54 g/m ²	Clear/Blue/Green	100*200	5Rolls/Carton
HRG150200	Medical Grade 60-70 g/m ²	Medical Grade 52-54 g/m ²	Clear/Blue/Green	150*200	3Rolls/Carton
HRG200200	Medical Grade 60-70 g/m ²	Medical Grade 52-54 g/m ²	Clear/Blue/Green	200*200	2Rolls/Carton
HRG250200	Medical Grade 60-70 g/m ²	Medical Grade 52-54 g/m ²	Clear/Blue/Green	250*200	2Rolls/Carton
HRG300200	Medical Grade 60-70g/m ²	Medical Grade 52-54 g/m ²	Clear/Blue/Green	300*200	1Rolls/Carton
HRG350200	Medical Grade 60-70g/m ²	Medical Grade 52-54 g/m ²	Clear/Blue/Green	350*200	1Rolls/Carton



Specifications:

- Manufactured from tinted heatsealable PET/PP film, 3 side sealed with a ribbed pattern to medical grade paper incorporating Steam and ETO indicators.
- Wet strength treated virgin medical grade paper that meets or exceeds medical pouch standards.
- Provide breathability, sterile barrier, and indication of processing
- Suitable for packaging extra long products or creating individual pouches of special length.
- Gusseted Design for larger volume

Applications:

Healthcare / Dental



Sterilization Indicator Tape

STYLE	COLOR	DIMENSION	STERILIZATION METHOD	PACKAGING
STEAM12550	Yellow	12.5mm*50m	STEAM	48roll/carton
STEAM19050	Yellow	19mm*50m	STEAM	48roll/carton
STEAM25050	Yellow	25mm*50m	STEAM	48roll/carton
EO12550	Yellow	12.5mm*50m	ETO	48roll/carton
EO19050	Yellow	19mm*50m	ETO	48roll/carton
EO25050	Yellow	25mm*50m	ETO	48roll/carton



Specifications:

- Made of pressure sensitive crepe paper
- Printed on the top with special indicator white ink, changed to brownish black, after steam sterilization
- To distinguish between processed and unprocessed package, to avoid of misuse

Applications:

Healthcare / Dental





CIMA[®]
Industries Inc.
Engineering, Processing and Packaging Technologies

Sterilization Wrap

PRODUCT CODE	SIZES (CM)	COLOR	PCS. PER BOX
WRAP3030	30x30	Green/Blue/White	2000
WRAP3838	38x38	Green/Blue/White	1000
WRAP4545	45x45	Green/Blue/White	1000
WRAP5050	50x50	Green/Blue/White	1000
WRAP6060	60x60	Green/Blue/White	1000
WRAP7575	75x75	Green/Blue/White	250
WRAP9090	90x90	Green/Blue/White	250
WRAP1010	100x100	Green/Blue/White	250
WRAP1212	120x120	Green/Blue/White	250
WRAP1313	135x135	Green/Blue/White	150



Specifications:

- A superior non-woven wrapping fabric for gas and steam sterilization.
- Folds and drapes like muslin - no springback. Strong; tear resistant; folds easily.
- Repellent to water, blood and saline.
- Effective against both air and water borne bacteria.

Applications:

Healthcare / Dental



CIMA[®]
Industries Inc.
Pharmaceutical Equipment

World Trade Center. 1er Piso, Área Comercial
Calle 53 Marbella. Apartado 0832-00155 WTC
Panamá, República de Panamá
Tel. +507 205 1915 Fax. +507 205 1802