

SHINVA



CIMA[®]
Industries Inc.
Pharmaceutical Equipment

MAST-A PULSE VACUUM STERILIZER (STANDARD) ⚙️



*Integral solutions
in medical equipment*



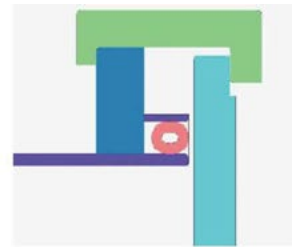
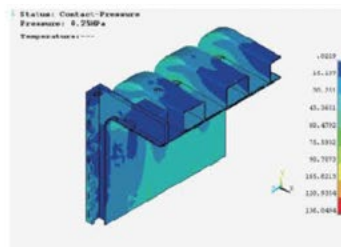
MAST-A PULSE VACUUM STERILIZER STANDARD

Product introduction

MAST-A is a high-temperature sterilizer which is researched and developed according to the latest requirements of medical institution and CSSD. It is designed and manufactured by referring to latest relative state standards to meet all sterilizing requirements of CSSD. The design of chamber accords with state 881502011 , 888599-2008, and European EN285 standard.

Product features

- Strict and standard manufacture process for product main body. MAST-A pulse vacuum sterilizer is welded by welding robot to guarantee the normalization and uniformity of the main body manufacture.
- No welding part on chamber wall. MAST-A pulse vacuum sterilizer has none welding part or bol! in the chamber which effectively protects the parcels to be sterilized. The chamber silicon rubber pad which is used to protect the chamber inner wall extends service life.
- Reliable and durable main body. The main body of MAST-A pulse vacuum sterilizer is designed according to professional analytical method. The modern high-emulation software ANSYS is used forma in body model simulation design. Design service life: 10 years (or 20000 times sterilization)
- Reasonable sealing structure. MAST-A pulse vacuum sterilizer adopts durable circular hollow sealing ring which is driven by compressed air.
- Intelligent pressure controller between the chamber and jacket. MAST-A pulse vacuum sterilizer adopts intelligent pressure controller to guarantee steam pressure and quality.



1 Sterilizer control



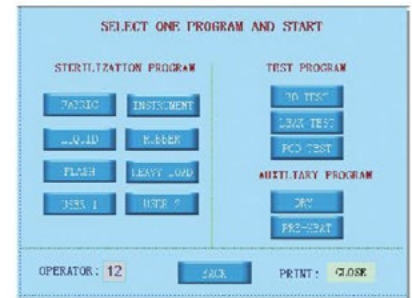
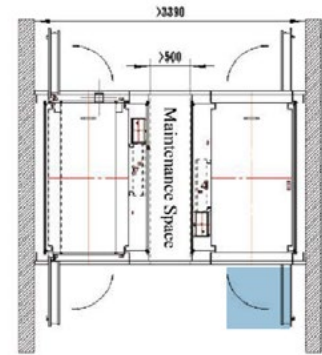
2 Parcel outer control



3 Loading control



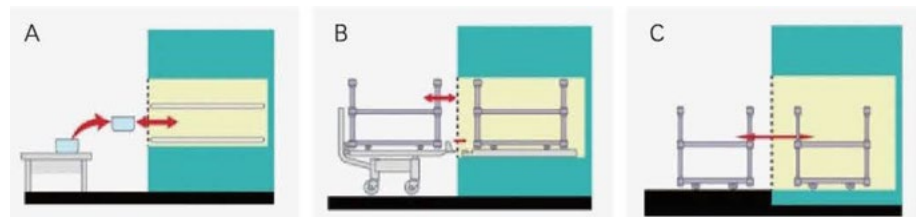
- Unique vacuum noise-reduction device. MAST-A series sterilizer equipped with LNS low-noise and water-saving vacuum system to reduce the operation noise.
- Humanized operation system. To meet user's need on unloading side, MAST-A pulse vacuum sterilizer adopts double-screen structure. Both loading and unloading sides have a screen to display sterilizer running status and alarming information.
- Reasonable pipeline layout that realizes single-side repair. MAST-A pulse vacuum sterilizer pipeline realizes single-side repair so that the sterilizer can be installed against the wall. Also, two sterilizers can use same repair space to save installation space.
- Multiple sterilizing programs. Compare with traditional sterilizer, MAST-A series sterilizer equipped with functions of steam pressure detection and steam saturation measurement. Also, the sterilizer has multiple sterilizing and testing programs such as PCD, rapid , rubber and custom, etc.
- Scientific design parameters, wide scope of application:



Cluses	Chamber	Jacket
Design presser MPa	-0.1/0.3	0.3
Design temperature °C	144	144
Working pressure MPa	0.25	0.25
Working temperature °C	139	139
Operating pressure of safety valve	0.28	0.28



MAST-A-350 S D-A-T-L



MAST-A	Model instruction
350	Chamber volume (L)
S	Door: S- double door D- single door
D	Steam supply: no marks- outer steam supply D- build-in steam generator S- steam and electric dual-use
A	Installation: A- loading trolley B- transfer trolley C- pit installation
T	Auxiliary order code: no marks- not tailor-made T- tailor-made
L	Configuration classes: L- low end No marks- standard H- high end



Technical parameters

Modelt ¹	Volume (L)	Order code	Netweight ² (KG)	Control power 0/ll'm)	Motive power 0/ll'm)	Chamber dimension (WXHX0mm)	Overall dimension (WXHXDmm)	Note
MAST-A -140	146	MAST-A -140D-A	425	220/0.5	380/1.5	420X420X830	880x1730x1166	single door/outer steam supply/loading trolley
		MAST-A-140DD-A	525	220/0.5	380/16.5	420X420X830	880x1730x1166	single door/build-in electric steam generator/loading trolley
		MAST-A-140DS-A	530	220/0.5	380/16.5	420X420X830	880x1730x1166	single door/steam and electric dual-use/loading trolley
		MAST-A-140S-A	510	220/0.5	380/1.5	420X420X830	880x1730x1266	double door/outer steam supply/loading trolley
		MAST-A-140SD-A	610	220/0.5	380/16.5	420X420X830	880x1730x1266	double door/build-in electric steam generator/loading trolley
		MAST-A-140SS-A	615	220/0.5	380/16.5	420X420X830	880x1730x1266	double door/steam and electric dual-use/loading trolley
MAST-A -240	241	MAST-A-240D-A	580	220/0.5	380/1.5	600X600X670	1286x1848x1000	single door/outer steam supply/loading trolley
		MAST-A-240DD-A	660	220/0.5	380/21.5	600X600X670	1286x1848x1000	single door/build-in electric steam generator/loading trolley
		MAST-A-240DS-A	670	220/0.5	380/21.5	600X600X670	1286x1848x1000	single door/steam and electric dual-use/loading trolley
		MAST-A-240S-A	660	220/0.5	380/1.5	600X600X670	1286x1848x1100	double door/outer steam supply/loading trolley
		MAST-A-240SD-A	720	220/0.5	380/21.5	600X600X670	1286x1848x1100	double door/build-in electric steam generator/loading trolley
		MAST-A-240SS-A	730	220/0.5	380/21.5	600X600X670	1286x1848x1100	double door/steam and electric dual-use/loading trolley
		MAST-A-240D-B	600	220/0.5	380/1.5	600X600X670	1286x1848x1000	single door/outer steam supply/Transfer trolley
		MAST-A-240DD-B	680	220/0.5	380/21.5	600X600X670	1286x1848x1000	single door/build-in electric steam generator/Transfer trolley
		MAST-A-240DS-B	690	220/0.5	380/21.5	600X600X670	1286x1848x1000	single door/steam and electric dual-use/transfer trolley
		MAST-A-240S-B	680	220/0.5	380/1.5	600X600X670	1286x1848x1100	double door/outer steam supply/transfer trolley
		MAST-A-240SD-B	740	220/0.5	380/21.5	600X600X670	1286x1848x1100	double door/build-in electric steam generator/transfer trolley
		MAST-A-240SS-B	750	220/0.5	380/21.5	600X600X670	1286x1848x1100	double door/steam and electric dual-use/Transfer trolley
MAST-A -350	352	MAST-A-350D-A	780	220/0.5	380/1.5	600X600X980	1286x1848x1310	single door/outer steam supply/loading trolley
		MAST-A-350DD-A	880	220/0.5	380/21.5	600X600X980	1286x1848x1310	single door/build-in electric steam generator/loading trolley
		MAST-A-350DS-A	880	220/0.5	380/21.5	600X600X980	1286x1848x1310	single door/steam and electric dual-use/loading trolley
		MAST-A-350S-A	860	220/0.5	380/1.5	600X600X980	1286x1848x1410	double door/outer steam supply/loading trolley
		MAST-A-350SD-A	960	220/0.5	380/21.5	600X600X980	1286x1848x1410	double door/build-in electric steam generator/loading trolley
		MAST-A-350SS-A	970	220/0.5	380/21.5	600X600X980	1286x1848x1410	double door/steam and electric dual-use/loading trolley
		MAST-A-350D-B	880	220/0.5	380/1.5	600X600X980	1286x1848x1310	single door/outer steam supply/Transfer trolley
		MAST-A-350DD-B	1000	220/0.5	380/21.5	600X600X980	1286x1848x1310	single door/build-in electric steam generator/transfer trolley
		MAST-A-350DS-B	1000	220/0.5	380/21.5	600X600X980	1286x1848x1310	single door/steam and electric dual-use/Transfer trolley
		MAST-A-350S-B	960	220/0.5	380/1.5	600X600X980	1286x1848x1410	double door/outer steam supply/transfer/trolley
		MAST-A-350SD-B	1080	220/0.5	380/21.5	600X600X980	1286x1848x1410	double door/build-in electric steam generator/transfer/transfer trolley
		MAST-A-350SS-B	1080	220/0.5	380/21.5	600X600X980	1286x1848x1410	double door/steam and electric dual-use/Transfer trolley
MAST-A -650	655	MAST-A-650D-B	1170	220/0.5	380/2.5	610X910X1180	1286x1980x1522	single door/outer steam supply/transfer trolley
		MAST-A-650DD-B	1270	220/0.5	380/42.5	610X910X1180	1286x1980x1522	single door/build-in electric steam generator/transfer trolley
		MAST-A-650DS-B	1240	220/0.5	380/42.5	610X910X1180	1286x1980x1522	single door/steam and electric dual-use/Transfer trolley
		MAST-A-650S-B	1270	220/0.5	380/2.5	610X910X1180	1286x1980x1602	double door/outer steam supply/transfer trolley
		MAST-A-650SD-B	1370	220/0.5	380/42.5	610X910X1180	1286x1980x1602	double door /build-in electric steam generator/Transfer trolley
		MAST-A-650SS-B	1380	220/0.5	380/42.5	610X910X1180	1286x1980x1602	double door/steam and electric dual-use/Transfer trolley
MAST-A -810	810	MAST-A-810D-B	1260	220/0.5	380/2.5	610X910X1460	1286x1980x1802	single door/outer steam supply/Transfer trolley
		MAST-A-810DD-B	1360	220/0.5	380/42.5	610X910X1460	1286x1980x1802	single door/build-in electric steam generator/Transfer trolley
		MAST-A-810DS-B	1360	220/0.5	380/42.5	610X910X1460	1286x1980x1802	single door/steam and electric dual-use/Transfer trolley
		MAST-A-810S-B	1360	220/0.5	380/2.5	610X910X1460	1286x1980x1882	double door/outer steam supply/Transfer trolley
		MAST-A-810SD-B	1460	220/0.5	380/42.5	610X910X1460	1286x1980x1882	double door/build-in electric steam generator/Transfer trolley
		MAST-A-810SS-B	1460	220/0.5	380/42.5	610X910X1460	1286x1980x1882	double door steam and electric dual-use/Transfer trolley
MAST-A -990	999	MAST-A-990D-B	1300	220/0.5	380/2.5	610X910X1800	1286x1980x2142	single door/outer steam supply/Transfer trolley
		MAST-A-990DD-B	1400	220/0.5	380/56.5	610X910X1800	1286x1980x2142	single door/build-in electric steam generator/Transfer trolley
		MAST-A-990DS-B	1400	220/0.5	380/56.5	610X910X1800	1286x1980x2142	single door/steam and electric dual-use/Transfer trolley
		MAST-A-990S-B	1400	220/0.5	380/2.5	610X910X1800	1286x1980x2222	double door/outer steam supply/Transfer trolley
		MAST-A-990SD-B	1500	220/0.5	380/56.5	610X910X1800	1286x1980x2222	double door/build-in electric steam generator/Transfer trolley
		MAST-A-990SS-B	1500	220/0.5	380/56.5	610X910X1800	1286x1980x2222	double door/steam and electric dual-use/Transfer trolley
MAST-A -1200	1203	MAST-A-1200D-B	1950	220/0.5	380/2.5	680X1180X1500	1445x1940x1890	single door/outer steam supply/Transfer trolley
		MAST-A-1200D-C	1950	220/0.5	380/2.5	680X1180X1500	1445x1940x1890	single door/outer steam supply/pit installation
		MAST-A-1200S-B	2050	220/0.5	380/2.5	680X1180X1500	1445x1940x1950	double door/outer steam supply/Transfer trolley
		MAST-A-1200S-C	2050	220/0.5	380/2.5	680X1180X1500	1445x1940x1950	double door/outer steam supply/pit installation
MAST-A -1500	1500	MAST-A-1500D-B	2111	220/0.5	380/4	680X1180X1870	1445x1940x2280	single door/outer steam supply/Transfer trolley
		MAST-A-1500D-C	2111	220/0.5	380/4	680X1180X1870	1445x1940x2280	single door/outer steam supply/pit installation
		MAST-A-1500S-B	2211	220/0.5	380/4	680X1180X1870	1445x1940x2320	double door/outer steam supply/Transfer trolley
		MAST-A-1500S-C	2211	220/0.5	380/4	680X1180X1870	1445x1940x2320	double door/outer steam supply/pit installation

Note:

1. The order codes mentioned above are only applicable for MAST-A pulse vacuum sterilizer (Standard).
2. Net weight: main body, frame, pipeline, transfer trolley (loading trolley), cover, build-in steam generator (packing is excluded).
3. Please read the following order instruction.
4. Please refer to technical instruction for detailed sterilizer configuration.

